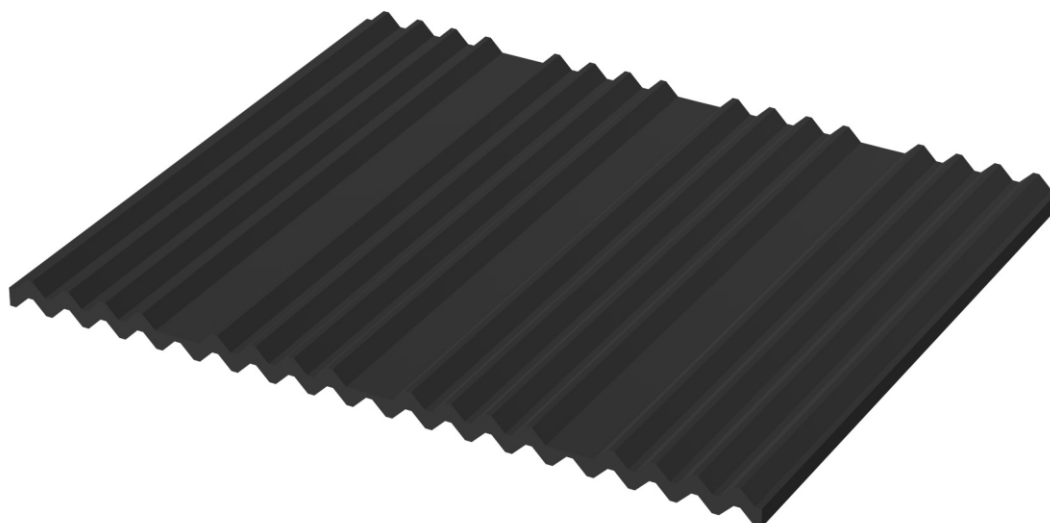


# Silencing washers

## Type SD

extrea®



### Product description

SD-type washers are profiled washers used as acoustic insulation for stair flights, landings and connecting platforms with pressures up to 10MPa.

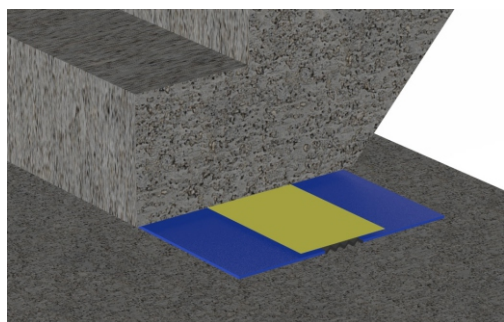
### Properties and advantages

- Made of EPDM rubber
- Used for small displacements: +/- 4,0 mm.
- They are used as acoustic insulation for stair flights, landings and connecting platforms.
- They can be used with a maximum pressure of 10 Mpa.
- They separate the prefabricated elements lying on one another.
- They prevent excessive eccentricity and edge loads.
- Compared to standard washers, they have a better noise reduction of at least 28 dB.
- They even out the bearing surface.
- The width of the washers can be easily divided in a 50 mm module.

### Washers types

#### → TD 21 SD washer

It is made of an elastomer core with a width of 50 or 100 mm and is protected against concreting with foam and crepe tape. The dimensions of the supplementary foam can be any.

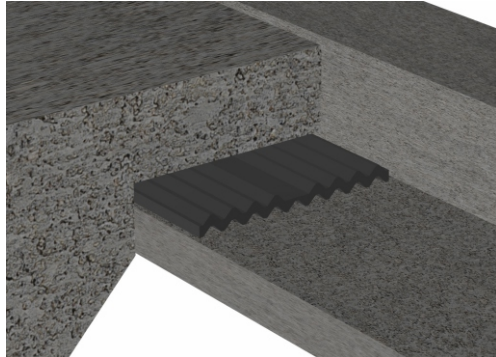


Washers thickness t [mm]	Core width be [mm]	Acceptable $\sigma_m$ [N/mm <sup>2</sup> ]	Acceptable displacement [mm]
5	50	10	+/- 2
5	100	10	+/- 2
5	150	10	+/- 2
5	200	10	+/- 2
10	50	10	+/- 4
10	100	10	+/- 4
10	150	10	+/- 4
10	200	10	+/- 4

## Washers types

### → SD washer

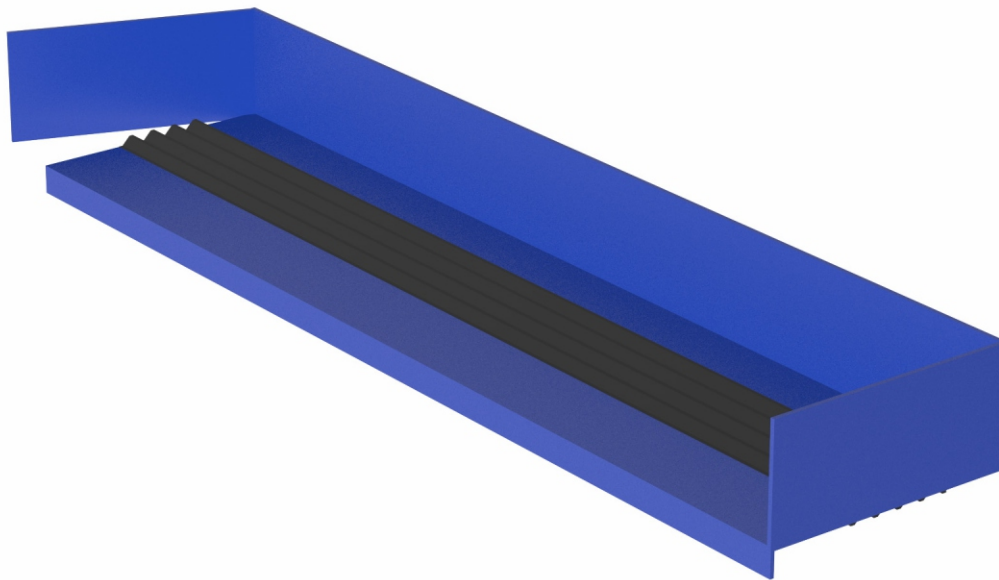
It is made of profiled elastomer with a width of 50, 100, 150, 200 mm and is not protected against concreting. It can be used for prefabricated stair flights, as well as in other elements that require sound attenuation, where the pressure on the washer does not exceed 10 Mpa.



Washers thickness t [mm]	Core width be [mm]	Acceptable $\sigma_m$ [N/mm <sup>2</sup> ]	Acceptable displacement [mm]
5	50	10	+/- 2
5	100	10	+/- 2
5	150	10	+/- 2
5	200	10	+/- 2
10	50	10	+/- 4
10	100	10	+/- 4
10	150	10	+/- 4
10	200	10	+/- 4

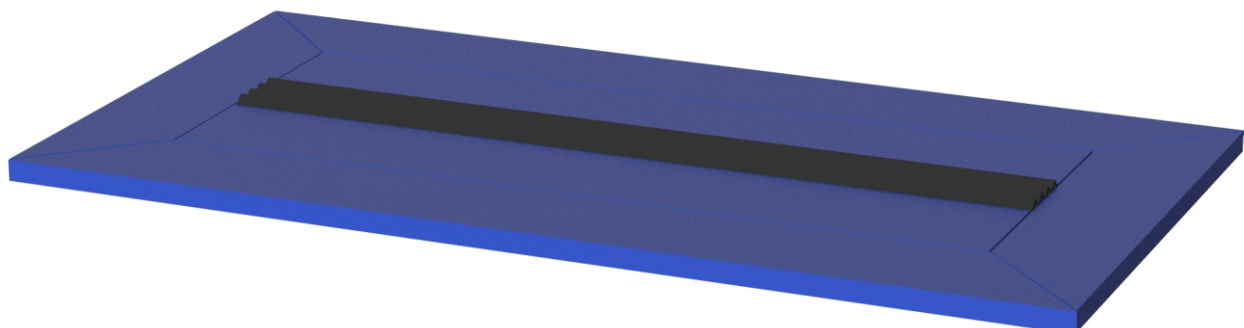
### → Z-type damping element

Z-shaped foam and plastic profile with an elastomeric core in the form of a ribbed acoustic washer. Improved footfall noise reduction up to 31 dB, equipped with side flaps to avoid acoustic bridges. Suitable for use with linings of different depths.



### → B-type damping element

Profile made of foam and plastic with an elastomer core in the form of a ribbed acoustic washer. The possibility of forming a foam casing avoids acoustic bridges.



### Fire resistance

SD washers have fire tests carried out at the Fire Research Laboratory of ITB. They have the REI 120 fire resistance class. When selecting washers, the guidelines included in the Technical Assessment No. 01155/17/Z00NZP should be taken into account.

### Documents

National Technical Assessment No. 01155/17/Z00NZP  
Declaration of Performance

### Safety

Safety rules must be followed during installation. Protective gloves and fully operable tools should be used.

### Storage

Prior to installation, protect against moisture and atmospheric factors.

### Notes

Individual types, dimensions and product catalog numbers can be found in the Extrea S.A. catalog. and on the website [www.extrea.pl](http://www.extrea.pl).